



The efficacy of automated "disease/no disease" grading for diabetic retinopathy in a systematic screening programme

Sam Philip, Alan D Fleming, Keith A Goatman, Sofia Fonseca, Paul Mcnamee, Graham S Scotland, Gordon J Prescott, Peter F Sharp and John Alexander Olson

Br. J. Ophthalmol. published online 15 May 2007;
doi:10.1136/bjo.2007.119453

Updated information and services can be found at:
<http://bjo.bmj.com/cgi/content/abstract/bjo.2007.119453v1>

These include:

Rapid responses

You can respond to this article at:
<http://bjo.bmj.com/cgi/eletter-submit/bjo.2007.119453v1>

Email alerting service

Receive free email alerts when new articles cite this article - sign up in the box at the top right corner of the article

Notes

Online First contains unedited articles in manuscript form that have been peer reviewed and accepted for publication but have not yet appeared in the paper journal (edited, typeset versions may be posted when available prior to final publication). Online First articles are citable and establish publication priority; they are indexed by PubMed from initial publication. Citations to Online First articles must include the digital object identifier (DOIs) and date of initial publication.

To order reprints of this article go to:
<http://www.bmjournals.com/cgi/reprintform>

To subscribe to *British Journal of Ophthalmology* go to:
<http://www.bmjournals.com/subscriptions/>

Title The efficacy of automated “disease/no disease” grading for diabetic retinopathy in a systematic screening programme

Keywords Diabetic retinopathy, Automated grading, Image analysis

Authors S Philip¹, AD Fleming², KA Goatman², S Fonseca³, P Mcnamee⁴, GS Scotland⁵, GJ Prescott⁶, PF Sharp⁷, JA Olson⁸

1. Clinical Research Fellow, Biomedical Physics and Grampian Retinal Screening Programme, University of Aberdeen, Foresterhill, AB25 2ZD
2. Research Fellow, Biomedical Physics, University of Aberdeen, Foresterhill, AB25 2ZD
3. Research Fellow, Department of Public Health, University of Aberdeen, Foresterhill, AB25 2LD
4. Senior Research Fellow, Health Economics Research Unit, University of Aberdeen, Foresterhill, Aberdeen AB25 2ZD
5. Research Fellow, Health Economics Research Unit, University of Aberdeen, Foresterhill, Aberdeen AB25 2ZD
6. Senior Lecturer in Medical Statistics, Department of Public Health, University of Aberdeen, Foresterhill, AB25 2LD
7. Professor of Medical Physics, Biomedical Physics, University of Aberdeen, Foresterhill, AB25 2ZD
8. Clinical Director, Retinal Screening, David Anderson Building, Foresterhill Road, Aberdeen, AB25 2ZP

Author for correspondence and guarantor

Dr John A. Olson, Clinical Director, Diabetes Retinal Screening Service, David Anderson Building, Foresterhill Road, Aberdeen AB25 2ZP. Email: John.olson@nhs.net.

Contributors

JAO was the principal investigator. JAO, PFS, KAG, PM and GJP designed the study. SP did the data collection and reference grading. ADF developed the automated methods. JAO did the quality assurance. SF and GJP did the statistical analyses. All participated in the interpretation of the data. SP and ADF wrote the first draft of the paper. All authors reviewed and revised the paper for important intellectual content. JAO takes responsibility for the content.

Licence

The Corresponding Author has the right to grant on behalf of all authors and does grant on behalf of all authors, an exclusive licence (or non exclusive for government employees) on a worldwide basis to the BMJ Publishing Group Ltd and its Licensees to permit this article (if accepted) to be published in BJO and any other BMJ PGL products to exploit all subsidiary rights, as set out in our licence (<http://bjo.bmjournals.com/ifora/licence.pdf>).

Ethical Approval

Ethical approval was obtained from the Grampian Medical Research Ethics Committee for the use of the anonymised images and grading data.

ABSTRACT

Aim: To assess the efficacy of automated “disease/no disease” grading for diabetic retinopathy within a systematic screening programme.

Methods: Anonymised images were obtained from consecutive patients attending a regional primary care based diabetic retinopathy screening programme. A training set of 1067 images was used to develop automated grading algorithms. The final software was tested using a separate set of 14406 images from 6722 patients. The sensitivity and specificity of manual and automated systems operating as “disease/no disease” graders (detecting poor quality images and any diabetic retinopathy) were determined relative to a clinical reference standard.

Results: The reference standard classified 8.2% of the patients as having ungradable images (technical failures) and 62.5% as having no retinopathy. Detection of technical failures or any retinopathy was achieved by manual grading with 86.5% sensitivity (95% confidence interval 85.1 to 87.8) and 95.3% specificity (94.6 to 95.9) and by automated grading with 90.5% sensitivity (89.3 to 91.6) and 67.4% specificity (66.0 to 68.8). Manual and automated grading detected 99.1% and 97.9%, respectively, of patients with referable or observable retinopathy/maculopathy. Manual and automated grading detected 95.7% and 99.8%, respectively, of technical failures.

Conclusion: Automated “disease/no disease” grading of diabetic retinopathy could safely reduce the burden of grading in diabetic retinopathy screening programmes.

Abbreviations HTBS, Health Technology Board for Scotland.
DH/MA, Dot haemorrhage/microaneurysm.

INTRODUCTION

Diabetic retinopathy is a major cause of visual impairment in Europe¹⁻³. Systematic screening for diabetic retinopathy in people with diabetes has been shown to be cost-effective and an essential component of their care.⁴⁻⁸ An ageing population, sedentary lifestyle and obesity all contribute to the increasing prevalence of type 2 diabetes. The number of people with diabetes is expected to double in the next 15 to 30 years.⁹ Delivery of a quality assured, systematic screening programme is a major challenge for health care providers. At the conference “Screening for Diabetic Retinopathy in Europe – 15 years after St. Vincent” on 17th – 18th November 2005 in Liverpool,¹⁰ official national representatives of 29 European Countries declared that European Countries should:

“Reduce the risk of visual impairment due to diabetic retinopathy by 2010 through:

- A systematic programme of screening reaching at least 80% of the population with diabetes
- Using trained professionals and personnel
- Universal access to laser therapy.”

Assuming a 4% prevalence of diabetes, governments in Europe may have to offer screening to 35 million people.¹¹

In our experience, 60% of patients screened have no retinopathy.¹² To make best use of limited resources, it has been proposed that the assessment of image quality and the presence or absence of any diabetic retinopathy could be performed by relatively inexperienced “disease/no disease” graders after a short period of training. Experienced “full disease” graders would then identify patients, deemed to have retinopathy, for referral to ophthalmology.¹³⁻¹⁵

Microaneurysms appear as red dots on colour photographs and are a sensitive sign of diabetic retinopathy.¹⁶ A number of automated systems for detecting microaneurysms in digital fundus photographs have been evaluated.¹⁶⁻¹⁹ However, before these systems could operate in screening practice they would require more thorough validation and the addition of a system for detecting images with ungradable quality.

The aim of this study was to compare a combined automated image quality and “disease/ no disease” grading system with the existing manual system in a diabetic retinopathy systematic screening programme.

METHODS

Study population

Anonymised images forming a test set were obtained prospectively from consecutive patients attending the Grampian Diabetes Retinal Screening Programme in 2003-2004 in North-East Scotland. This consisted of 14406 images from 6722 consecutive patients. The median age was 65 years (IQR 19 years), 3725 (55%) were male and 46 (0.7%) had only one screenable eye. 1423 patients (21.2%) received mydriasis as adequate quality photographs were not obtained with undilated photography. Ethical approval was obtained from the Grampian Medical Research Ethics Committee for the use of the anonymised images and grading data.

Photographic protocol

The programme used non-mydriatic 45-degree fixed Canon CR5-45NM and mobile Canon CR6-45NM fundus cameras (Canon Inc. Medical Equipment Business Group, Kanagawa, Japan) attached to Canon D30 digital colour cameras (2160×1440 pixels). Each patient had a minimum of one disc/macula photograph per screenable eye.¹³ The photographers took additional photographs if image quality or field definition was considered inadequate at the time of photography. If the photograph was inadequate because the pupil was too small then the pupils were dilated using Tropicamide 1% (Chauvin Pharmaceuticals Ltd, England).

Reference standard grading

The test set images were displayed on a contrast adjusted 22 inch monitor (Iiyama Vision Master Pro 512) at full resolution and graded by the clinical research fellow using the definitions of Table 1. The quality grading included assessments of field definition and image clarity. The clinical research fellow was trained to use the Scottish Diabetic Retinopathy Grading Scheme (Table 1), with 500 images from a training set. This is based on the ETDRS grading scheme, adapted for non-stereoscopic single disc/macula field photographs, and very similar to the "International clinical diabetic retinopathy and diabetic macula edema severity scale".¹⁴

There was good agreement between the clinical research fellow and the clinical director for retinal screening outcome ($\kappa=0.91$), grade of retinopathy ($\kappa=0.85$) and grade of maculopathy ($\kappa=0.85$) for the training set.

Disease/no disease grading systems

This study assessed the efficacy of the manual and automated "disease/no disease" grading systems against the reference standard (Figure 1). In the manual system, patients were referred for "full disease" grading if the images of either eye were of inadequate quality or if any diabetic retinopathy was detected. The automated system referred patients for "full disease" grading if all images of one eye were of inadequate quality or if dot haemorrhage/microaneurysms (DH/MA) were detected.

The manual grading of the retinal images was performed by three retinal screeners who also performed the photography. They were trained according to the recommendations of the HTBS.¹³ Manual graders recorded one grade for each eye.

Table 1: The Scottish Diabetic Retinopathy Grading Scheme 2004.⁷

Retinopathy	Description
R0 (No visible retinopathy)	No diabetic retinopathy anywhere.
R1 (Mild background retinopathy)	<ul style="list-style-type: none"> At least one dot haemorrhage or microaneurysm with or without hard exudates.
M1 (Observable maculopathy)	<p>Lesions within a radius of >1 but ≤ 2 disc diameters of the centre of the fovea:</p> <ul style="list-style-type: none"> Any hard exudates.
R2 (Observable background retinopathy)	<ul style="list-style-type: none"> Four or more blot haemorrhages (\geqAirlie House, AH, standard photograph 2a) in one hemi-field only (inferior and superior hemi-fields delineated by a line passing through the centre of the fovea and optic disc).
M2 (Referable maculopathy)	<p>Lesions within a radius of ≤ 1 disc diameter of the centre of the fovea:</p> <ul style="list-style-type: none"> Any blot haemorrhages. Any hard exudates.
R3 (Referable background retinopathy)	<p>Any of the following features:</p> <ul style="list-style-type: none"> Four or more blot haemorrhages (\geqAH standard photograph 2a) in both inferior and superior hemi-fields. Venous beading (\geqAH standard photograph 6a). IRMA (\geqAH standard photograph 8a).
R4 (Proliferative retinopathy)	<p>Any of the following features:</p> <ul style="list-style-type: none"> Active new vessels. Vitreous haemorrhage.
R5 (Enucleated eye)	Enucleated eye
R6 (Technical failure)	<ul style="list-style-type: none"> Significant blurring of major arcade vessels in $>1/3$ of image in the absence of referable retinopathy

The automated grading system consisted of software for image quality assessment and for DH/MA detection. The software was developed using a training set which was separate from the test set. Details of the image processing methods are described elsewhere.^{17,24-27} Quality assessment was performed in two steps, field definition assessment and clarity assessment. Field definition was assessed by ascertaining the location of the optic disc and the fovea, and whether both temporal arcades were visible. The position of the optic disc was found by identifying a circular shape lying at the apex of an approximate ellipse formed by the temporal arcades. The fovea was identified as a dark area close to a point at a fixed distance from the optic disc and on the centreline of the elliptical temporal arcades. Image clarity was assessed by checking the length of visible small vessels within a circle of radius of 1.75 optic disc diameters around the fovea. An image was judged to have adequate quality for retinopathy detection if it had both adequate field definition and adequate clarity. The location, in the image, of the optic disc and the orientation of the course of the temporal arcades was used to decide whether an image was of the left or right eye.

If there was at least one image of adequate quality for each eye, then DH/MA detection was applied to all images of adequate quality for that patient. Dark objects of limited size were detected using techniques from mathematical morphology and used as DH/MA candidates. Since many of these are not real DH/MAs, features were evaluated on each candidate such as area, eccentricity, mean intensity and mean intensity gradient. The features were used to classify candidates as true or false identifications. DH/MA detection was improved by recent developments that include explicit vessel detection and analysis of the background retina around candidates.²⁶

The operating point of DH/MA detection can be adjusted to alter its sensitivity, an increase in sensitivity being accompanied by a decrease in specificity. Due to inter-eye concordance, the sensitivity must be

adjusted according to the results per patient rather than the results per eye. We used an operating point which gave a higher sensitivity for detection of patients with any retinopathy than that of manual graders.

Statistical Analysis

Data were analysed using the Statistical Package for Social Sciences (SPSS, version 13.0). Sensitivity and specificity are presented for manual and automated grading with confidence intervals calculated using the Wilson score method without continuity correction. Overall agreements were measured using the kappa (κ) statistic. McNemar tests were used to compare positive agreement between the automated and manual grading.

RESULTS

Tables 2, 3, 4 and 5 compare the performance of the manual and automated “disease/no disease” grading systems against the reference standard. Table 2 shows frequencies of patients with each grade of retinopathy as assigned by the reference standard process. Table 2 also shows detection rates and the number of missed cases for each retinopathy grade and for each “disease/no disease” grading system. The number of patients misclassified as normal by the automated system (n=240) was significantly lower than for the manual system (n=341) ($p<0.001$).

Table 2: Detection rates, with 95% confidence intervals (CI), by patient, for manual and automated “disease/no disease” grading for each of the grades assigned by the reference standard. The frequency of occurrence of each grade as a percentage of the total 6722 patients is also given.

Grades assigned by reference standard	Frequency of occurrence	Manual: by patient		Automated: by patient	
		“Disease/no disease” grading detection rate [CI] [CI]	Missed cases	“Disease/no disease” grading detection rate [CI] [CI]	Missed cases
R1 (Mild background retinopathy)	24.4%	80.9% [78.9-82.7] 1326/1640	314	85.9% [84.1-87.5] 1408/1640	232
M1 (Observable maculopathy)	1.1%	98.7% [92.9-99.8] 75/76	1	97.4% [90.9-99.3] 74/76	2
R2 (Observable background retinopathy)	0.1%	100% [67.6-100] 8/8	0	100% [67.6-100] 8/8	0
M2 (Referable maculopathy)	2.7%	99.4% [96.9-99.9] 178/179	1	97.2% [93.6-98.8] 174/179	5
R3 (Referable background retinopathy)	0.6%	97.4% [86.8-99.5] 38/39	1	100% [91.0-100] 39/39	0
R4 (Proliferative retinopathy)	0.4%	100% [87.9-100] 28/28	0	100% [87.9-100] 28/28	0
R6 (Technical failure)	8.2%	95.7% [93.6-97.1] 529/553	24	99.8% [99.0-100] 552/553	1

Table 2 shows that three of the 330 patients with referable or observable retinopathy/maculopathy (M1, R2, M2, R3 or R4) were graded as having no retinopathy by the manual system and that seven were graded as having no retinopathy by the automated system. The difference is not statistically significant ($p=0.125$). None of the non-referred patients had new vessel growth. One patient (M2) had solitary minor exudate formation and was missed by both systems. Six other patients (two M1, four M2) were missed by the automated system: two had solitary blot haemorrhages, one had a small solitary linear streak of exudate and three had small, scattered exudates. The manual system missed two additional patients, one with isolated intra-retinal microvascular anomalies (R3) and one with microaneurysms and small exudates (M1).

Table 3: Detection rates, with 95% confidence intervals (CI), by eye and by image for manual and for automated “disease/no disease” grading for each of the grades assigned by the reference standard. The frequency of occurrence of each grade as a percentage of the total 13398 eyes is also given.

Grades assigned by reference standard	Frequency of occurrence	Manual: by eye		Automated: by eye		Automated: by image	
		“Disease/no disease” grading detection rate [CI]	Missed cases	“Disease/no disease” grading detection rate [CI]	Missed cases	“Disease/no disease” grading detection rate [CI]	Missed cases
R1 (Mild background retinopathy)	19.6%	76.8% [75.1-78.3] 2019/2630	611	80.0% [78.4-81.4] 2103/2630	527	80.4% [78.8-81.8] 2211/2751	540
M1 (Observable maculopathy)	0.9%	96.6% [91.5-98.7] 112/116	4	94.0% [88.1-97.0] 109/116	7	94.4% [88.8-97.2] 117/124	7
R2 (Observable background retinopathy)	0.1%	100% [80.6-100] 16/16	0	93.8% [71.7-98.9] 15/16	1	94.7% [75.4-99.1] 18/19	1
M2 (Referable maculopathy)	1.9%	98.4% [95.9-99.4] 245/249	4	94.0% [90.3-96.3] 234/249	15	93.8% [90.2-96.1] 255/272	17
R3 (Referable background retinopathy)	0.4%	95.8% [86.0-98.8] 46/48	2	97.9% [89.1-99.6] 47/48	1	98.0% [89.7-99.7] 50/51	1
R4 (Proliferative retinopathy)	0.3%	100% [90.4-100] 36/36	0	94.4% [81.9-98.5] 34/36	2	95.2% [84.2-98.7] 40/42	2
R6 (Technical failure)	5.0%	90.6% [88.1-92.6] 606/669	24	99.4% [98.5-99.8] 665/669	4	98.4% [97.4-99.0] 963/979	16

Table 3 presents data in a similar format but for detection rates in eyes and images. The manual and automated systems missed 10 eyes and 26 eyes, respectively, out of 465 eyes with referable or observable retinopathy/maculopathy. In terms of images, the automated system missed 28 out of 527. It was not possible to obtain detection rates for the manual system by image since the manual graders provided a composite grade for each eye. Two eyes from two patients graded as R4 but missed by the automated system were found, at clinical review, to have mild background diabetic retinopathy and disc collaterals resulting from old retinal vein occlusions.

Table 4: Sensitivities and specificities, with 95% confidence intervals (CI), for technical failures, any “disease” in patients with no technical failure, and referral for “full disease” grading. The results are based on the analysis of images from both eyes of each patient.

		Manual: by patient [CI]	Automated: by patient [CI]
Technical failures	Sensitivity	93.7% [91.3-95.4] 518/553	99.5% [98.4-99.8] 550/553
	Specificity	99.0% [98.7-99.2] 6107/6169	84.4% [83.5-85.3] 5206/6169
Any “disease” in patients with no technical failure.	Sensitivity	83.8% [82.1-85.3] 1635/1952	85.5% [83.7-87.1] 1404/1643
	Specificity	96.3% [95.6-96.8] 4000/4155	79.4% [78.1-80.7] 2830/3563
Referral for “full disease” grading	Sensitivity	86.5% [85.1-87.8] 2182/2523	90.5% [89.3-91.6] 2283/2523
	Specificity	95.3% [94.6-95.9] 4000/4199	67.4% [66.0-68.8] 2830/4199

Table 5: Sensitivities and specificities, with 95% confidence intervals (CI), for technical failures, any “disease” in patients with no technical failure, and referral for “full disease” grading. The results are based on the analysis of each eye and also of each individual image.

		Manual: by eye [CI]	Automated: by eye [CI]	Automated: by image [CI]
Technical failures	Sensitivity	89.1% [86.5-91.2] 596/669	98.4% [97.1-99.1] 658/669	97.0% [95.8-97.9] 950/979
	Specificity	99.1% [98.9-99.2] 12611/12729	89.7% [89.2-90.2] 11420/12729	87.5% [86.9-88.1] 11750/13427
Any “disease” in patients with no technical failure.	Sensitivity	80.6% [79.1-81.9] 2475/3072	80.1% [78.6-81.5] 2224/2777	80.2% [78.7-81.6] 2296/2864
	Specificity	95.5% [95.0-95.9] 9105/9539	87.8% [87.1-88.5] 7587/8643	87.9% [87.2-88.6] 7814/8886
Referral for “full disease” grading	Sensitivity	82.7% [81.4-83.9] 3112/3764	85.2% [84.0-86.3] 3207/3764	86.2% [85.1-87.2] 3653/4237
	Specificity	94.5% [94.0-94.9] 9105/9634	78.8% [77.9-79.6] 7587/9634	76.8% [76.0-77.7] 7814/10169

Tables 4 and 5 show sensitivities and specificities for both grading systems. In Table 4, the results are presented by patient and, in Table 5, by eye and by image. As for Table 3, it was not possible to obtain results by image for the manual system. Technical failure sensitivities and specificities are for the quality assessment stage of the two systems alone and take no account of disease. Sensitivities and specificities for detection of any “disease” in patients with no technical failure are based on the subset of cases where a decision on the presence of retinopathy was made by both the reference standard and by the grading system under assessment. They therefore ignore cases deemed as technical failure by either the reference standard or by the grading system under assessment. Sensitivities and specificities for referral to “full disease” grading are based on a “disease/no disease” grading result combining technical failure and any “disease” detection. They indicate the proportions of cases that were correctly determined as being normal or abnormal by the grading system under assessment.

DISCUSSION

The results reported in this paper suggest that automated image grading offers diabetic retinopathy screening programmes an opportunity to reduce safely the manual burden of grading.

The automated “disease/no disease” grading software was more sensitive but less specific than its manual equivalent. Since “disease/no disease grading” is only part of the grading process, the overall specificity is unlikely to be affected.

The main function of any grading system is to identify those patients who require referral to ophthalmology or who are not suitable for photographic screening. As well as being effective, automated “disease/no disease” grading has the potential to reduce the human workload of grading. Manual “disease/no disease” grading and “full disease” graders undertook, respectively, 6722 and 2545 grading episodes (including 164 cases referred to “full disease” grading due to concerns about non-diabetic eye disease) totalling 9267 episodes. In comparison, a system using automated “disease/no disease” grading and manual “full disease” grading would have led to only 3652 manual grading episodes. This equates to a 60% workload reduction.

The current system had higher sensitivity and lower specificity than reported in our previous work, but this had been confined to good quality images.¹⁷ Other studies have reported higher sensitivities and specificities, but they used small numbers of patients and did not include automated quality assessment.^{18,19,28-30} The only comparable study used retinal photographs, manually graded for quality, from 773 patients. Candidate bright and dark lesions were identified by image analysis and features classified by a neural network. The authors’ recommended operating point gave a sensitivity of 94.8% and specificity of 52.8%.³⁰

In our study, automated grading missed 5 cases of referable retinopathy/maculopathy (Table 2). While this is a concern, the main identifiable source of false negatives in the grading pathway was “full disease” grading accounting for 18 missed cases of referable eye disease in the test set (16 of referable maculopathy and 2 of severe background diabetic retinopathy). The two eyes graded as having proliferative retinopathy and missed by the automated system (Table 3), were found to have only mild diabetic retinopathy at eye clinic examination. The automated system detected both patients due to retinopathy in the opposite eye.

The demographic profile of the patients was similar to that reported in the Scottish Diabetes Survey 2003.³¹ The prevalence of referable retinopathy is comparable to that reported from Tayside (3.0%) and Newcastle (4.5%) but lower than that reported from Liverpool (7.1%) and Cheltenham (12.2%).^{21,31-34} As with many screening programmes, the main indications for additional slit lamp examination (883 patients, 13.1%) were people with ungradeable images (553, 8.2%). Although the population studied was predominantly caucasian, racial variations in pigmentation mainly affect the reflectance of blue and red light from the retina causing differences in retinal colour. Our automated software uses mainly the green plane of the image, which we would expect to be more affected by photographic conditions than by racial variations in retinal pigmentation.

We have presented results by patient, by eye and by image to enable comparison with other grading systems. As was expected, due to concordance between patient eyes, automated detection rates for images and eyes had lower sensitivities and higher specificities than the corresponding detection rates for patients.

The automated methods tested in this study are adaptable to local photographic procedures and equipment. For example, photographic protocols requiring a higher number of images per eye may result in a higher sensitivity and lower specificity per patient so that the operating point for the sensitivity of DH/MA detection would need to be altered if similar results to those presented here are desired. Variations in photographic scale can be handled by scaling of images to a standard number of pixels per degree. There are also local variations in requirements pertaining to retinal field of view. This would affect the field definition aspect of automated image quality assessment but can be adjusted by straightforward modification of software parameters.²⁵ Any necessary resizing or selection of software parameters could then be made appropriately for each case.

Automated grading can run almost continuously at a speed depending on the computer system and the number of parallel processors. For example, the average time to process one patient is under 4 minutes on a 3 GHz Pentium processor whereas manual grading typically requires 6 minutes.

Automated grading could have a significant impact on the costs of quality assurance, an essential component of systematic screening. The small increase in quality assurance required for “full disease”

graders (due to the higher referral rate) would be outweighed by the reduced quality assurance requirements for “disease/no disease” grading even though the automated system would be treated as an additional grader.

In conclusion, automated grading of diabetic retinopathy and image quality could safely reduce the burden of “disease/no disease” grading in diabetic retinopathy screening programmes and could facilitate implementation of screening across Europe.

Acknowledgements

We would like to thank Lorraine Urquhart and members of her team from the Grampian Retinal Screening Programme for their support.

Competing interests

Implementation in Scotland is being considered. If this occurs it is likely that there will be some remuneration for the University of Aberdeen, NHS Grampian and the Scottish Executive.

Funding

This project was funded by the Chief Scientist Office, Scottish Executive Health Department (grant number CZH/4/76).

Figures

Figure 1: Flow charts of the “disease/no disease” manual and automated graded systems for assessment of eyes, images and patients. The automated system detected dot haemorrhages/microaneurysms (DH/MA).

References

- 1 **Kocur I**, Resnikoff S. Visual impairment and blindness in Europe and their prevention. *Brit J Ophthalmol* 2002;**86**:716-22.
- 2 **Bamashmus MA**, Matlhaga B, Dutton GN. Causes of blindness and visual impairment in the West of Scotland. *Eye* 2004;**18**:257-61.
- 3 **Evans J**, Rooney C, Ashwood F, Dattani N, Wormald. Blindness and partial sight in England and Wales: April 1990-March 1991. *Health Trends* 1996;**28**:5-12.
- 4 **Foulds WS**, McCuish A, Barrie T, Green F, Scobie IN, Ghafour IM, et al. Diabetic retinopathy in the West of Scotland: its detection and prevalence, and the cost-effectiveness of a proposed screening programme. *Health Bull (Edinb)* 1983;**41**:318-26.
- 5 **Sculpher MJ**, Buxton MJ, Ferguson BA, Spiegelhalter DJ, Kirby AJ. Screening for diabetic retinopathy: a relative cost-effectiveness analysis of alternative modalities and strategies. *Health Econ* 1992;**1**:39-51.
- 6 **James M**, Turner DA, Broadbent DM, Vora J, Harding SP. Cost effectiveness analysis of screening for sight threatening diabetic eye disease. *BMJ* 2000;**320**:1627-31.
- 7 **Diabetic Retinopathy Screening Implementation Group**. Diabetic retinopathy screening services in Scotland: recommendations for implementation. Edinburgh: Scottish Executive; 2003.
- 8 **Scottish Intercollegiate Guidelines Network**. SIGN 55. Management of Diabetes. Guidelines. Edinburgh: *Scottish Intercollegiate Guidelines Network* 2001.
- 9 **Wild S**, Roglic G, Green A, Sicree R, King H. Global prevalence of diabetes: estimates for the year 2000 and projections for 2030. *Diabetes Care* 2004;**27**:1047-53.
- 10 **European conference on Screening for diabetic retinopathy in Europe** May 2006, (http://www.drscreening2005.org.uk/conference_report.doc, accessed 19th March 2007).
- 11 **World Health Organization**. Atlas of health in Europe, World Health Organisation. (<http://www.euro.who.int/Document/E79876.pdf>, accessed 19th March 2007)

- 12 **Philip S**, Cowie LM, Olson JA. The impact of the Health Technology Board for Scotland's grading model on referrals to ophthalmology services. *Br J Ophthalmol* 2005;**89**:891-6.
- 13 **Facey K**, Cummins E, Macpherson K, Morris A, Reay L, Slattery J. Organisation of Services for diabetic retinopathy screening ,Health Technology Assessment Report 1. Glasgow: Health Technology Board for Scotland; 2002.
- 14 **Wilkinson CP**, Ferris FL III, Klein RE, et al. Proposed international clinical diabetic retinopathy and diabetic macular edema disease severity scales. *Ophthalmology* 2003;**101**:1677–82.
- 15 **Harding S**, Greenwood R, Aldington S, Gibson J, Owens D, Taylor R, et al. Grading and disease management in national screening for diabetic retinopathy in England and Wales. *Diabet Med* 2003;**20**:965-71.
- 16 **Kohner EM**, Stratton IM, Aldington SJ, Turner RC, Matthews DR. Microaneurysms in the development of diabetic retinopathy (UKPDS 42). UK Prospective Diabetes Study Group. *Diabetologia* 1999;**42**:1107-12.
- 17 **Hipwell JH**, Strachan F, Olson JA, McHardy KC, Sharp PF, Forrester JV. Automated detection of microaneurysms in digital red-free photographs: a diabetic retinopathy screening tool. *Diabet Med* 2000;**17**:588-94.
- 18 **Larsen M**, Godt J, Larsen N, Lund-Andersen H, Sjolie AK, Agardh E, et al. Automated detection of fundus photographic red lesions in diabetic retinopathy. *Invest Ophthalmol Vis Sci* 2003;**44**:761-6.
- 19 **Niemeijer M**, van Ginneken B, Staal J, Suttrop-Schulten MS, Abramoff MD. Automatic detection of red lesions in digital color fundus photographs. *IEEE Trans Med Imaging* 2005;**24**:584-92.
- 20 **Olson JA**, Strachan FM, Hipwell JH, Goatman KA, McHardy KC, Forrester JV, et al. A comparative evaluation of digital imaging, retinal photography and optometrist examination in screening for diabetic retinopathy. *Diabet Med* 2003;**20**:528-34.
- 21 **Scanlon PH**, Malhotra R, Thomas G, Foy C, Kirkpatrick JN, Lewis-Barned N, et al. The effectiveness of screening for diabetic retinopathy by digital imaging photography and technician ophthalmoscopy. *Diabet Med* 2003;**20**:467-74.
- 22 **Agrawal A**, McKibbin MA. Technical failure in photographic screening for diabetic retinopathy. *Diabet Med* 2003;**20**:777.
- 23 **NHS Quality Improvement Scotland**. Diabetic Retinopathy Screening. Clinical Standards ~ March 2004. 2004:29.
- 24 **Cree MJ**, Olson JA, McHardy KC, Sharp PF, Forrester JV. A fully automated comparative microaneurysm digital detection system. *Eye* 1997;**11**:622-8.
- 25 **Fleming AD**, Philip S, Goatman KA, Olson JA, Sharp PF. Automated assessment of diabetic retinal image quality based on clarity and field definition. *Invest Ophthalmol Vis Sci* 2006;**47**:1120-5.
- 26 **Fleming AD**, Philip S, Goatman KA, Olson JA, Sharp PF. Automated microaneurysm detection using local contrast normalization and local vessel detection, *IEEE T Med Imaging*; 2006;**25**:1223-32.
- 27 **Fleming AD**, Goatman KA, Philip S, Olson JA, Sharp PF. Automatic detection of retinal anatomy to assist diabetic retinopathy screening, *Phys Med Biol*;2007;**52**,33-45
- 28 **Lee SC**, Lee ET, Kingsley RM, Wang Y, Russell D, Klein R, et al. Comparison of diagnosis of early retinal lesions of diabetic retinopathy between a computer system and human experts. *Arch Ophthalmol* 2001;**119**:509-15.
- 29 **Sinthanayothin C**, Boyce JF, Williamson TH, Cook HL, Mensah E, Lal S, et al. Automated detection of diabetic retinopathy on digital fundus images. *Diabet Med* 2002;**19**:105-12.
- 30 **Usher D**, Dumskyj M, Himaga M, Williamson TH, Nussey S, Boyce J. Automated detection of diabetic retinopathy in digital retinal images: a tool for diabetic retinopathy screening. *Diabetic Med* 2004;**21**:84-90.
- 31 **Scottish Diabetes Survey Monitoring Group**, Scotland. Scottish Executive. *Scottish diabetes survey 2002*. Edinburgh: Scottish Executive; 2003.

- 32 **Leese GP**, Morris AD, Swaminathan K, Petrie JR, Sinharay R, Ellingford A, et al. Implementation of national diabetes retinal screening programme is associated with a lower proportion of patients referred to ophthalmology. *Diabet Med* 2005;**22**:1112-5.
- 33 **Younis N**, Broadbent DM, Vora JR, *et al.* Prevalence of diabetic eye disease in patients entering a systematic primary care-based eye screening programme. *Diabet Med* 2002;**19**:1014–21.
- 34 **Pandit RJ**, Taylor R. Quality assurance in screening for sight-threatening diabetic retinopathy. *Diabet Med* 2002;**19**:285–91.

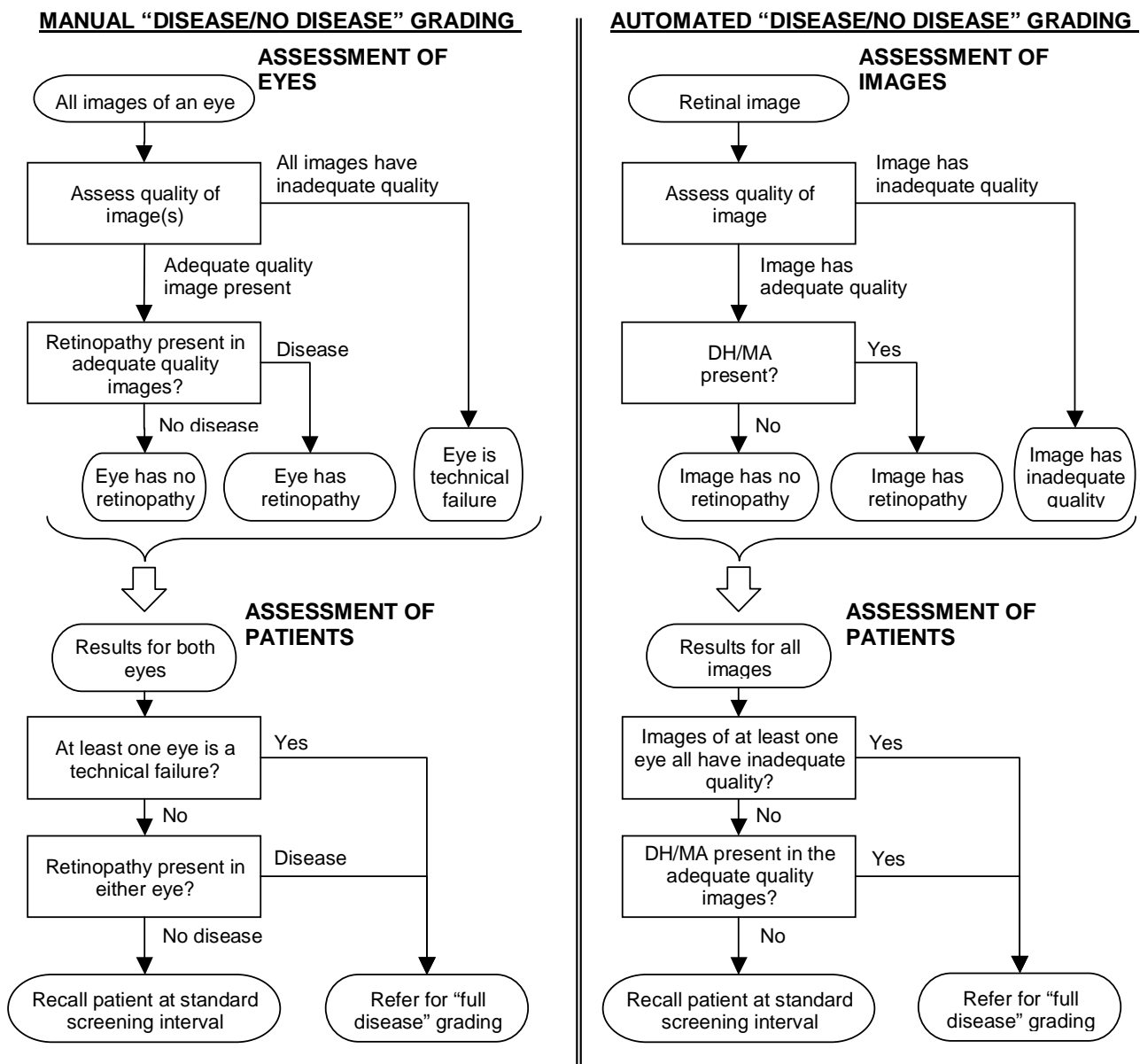


Figure 1. Flow charts of the "disease/no disease" manual and automated graded systems for assessment of eyes, images and patients. The automated system detected dot haemorrhages/microaneurysms (DH/MA).